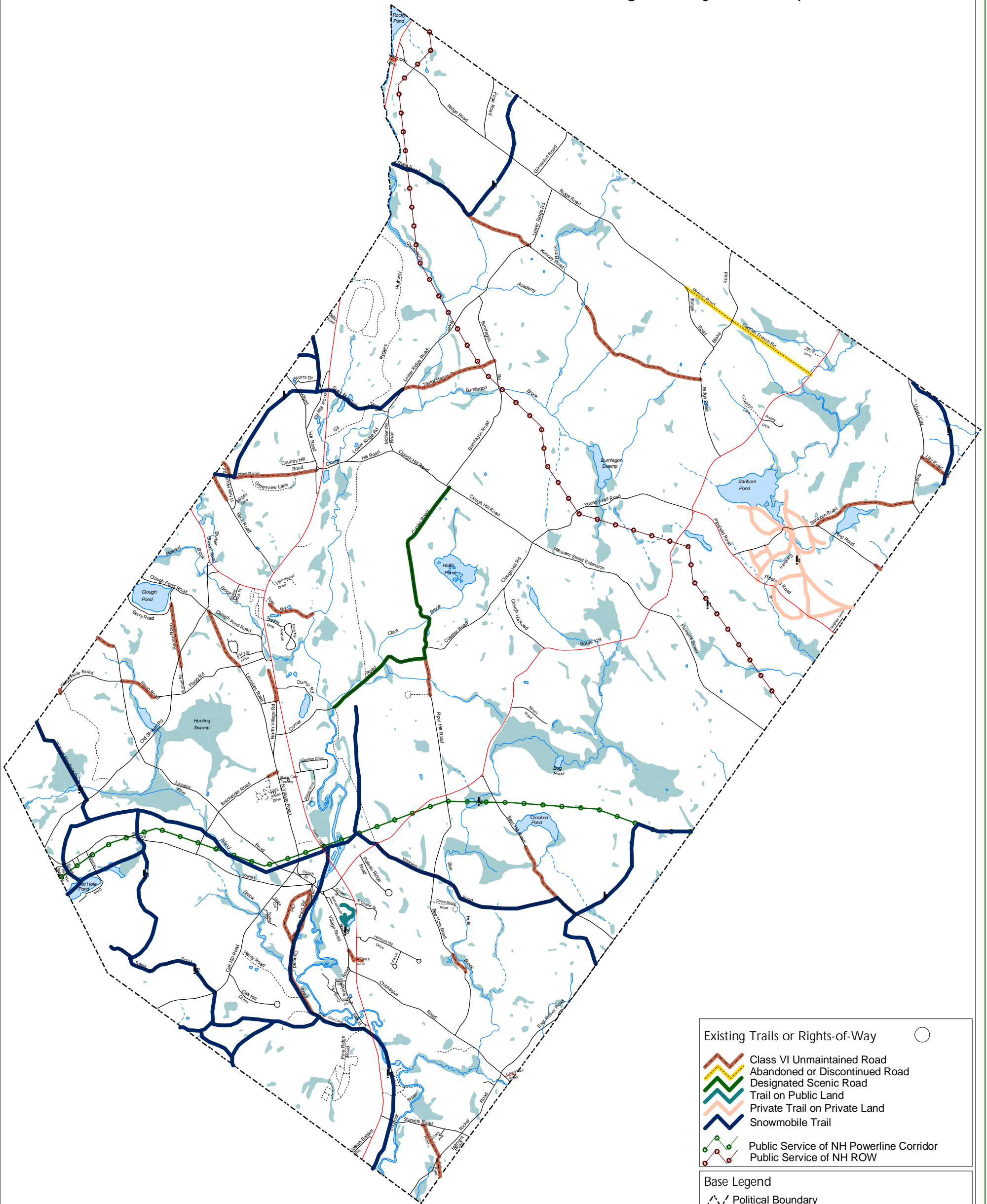


Town of Loudon

Existing Trail System Map



Existing Trails or Rights-of-Way

- Class VI Unmaintained Road
- Abandoned or Discontinued Road
- Designated Scenic Road
- Trail on Public Land
- Private Trail on Private Land
- Snowmobile Trail
- Public Service of NH Powerline Corridor
- Public Service of NH ROW

Base Legend

- Political Boundary
- Class I & II Secondary State Highways
- Class V Town Maintained Roads
- Class VI Town Unmaintained Roads
- Other Roads (Private, Future Discontinued, etc)
- Rivers and Streams
- Intermittent Streams
- Water Bodies
- Wetlands



This map was produced by the Central New Hampshire Regional Planning Commission for the Town of Loudon through the Year-Four Regional Environmental Planning Program (REPP) funded by the NH Department of Environmental Services.

Data Sources for the Loudon Open Space Trail System Plan Map Series:
 Town of Loudon Tax Maps;
 USGS quadrangles through NH GRANIT (1:24000);
 Society for the Protection of NH Forests (1:24000);
 CNHRPC; and the Loudon Trails Steering Committee.
 Corrections of existing layers by the Town of Loudon and CNHRPC.

Map 4

DISCLAIMER:
 This map is meant to portray those trails and rights-of-way which are generally thought of within the Town of Loudon as being currently used as recreational trails, with the exception of the Powerline Corridor. This map should not be used to assume landowner permission has been granted for public use of any or all of the trails or rights-of-way which fall on private land. This map should be used in conjunction with the accompanying Open Space Trail System Plan, 2001. Any questions or concerns should be directed to the Town of Loudon at 798-4541 or to the CNHRPC at 226-6020.